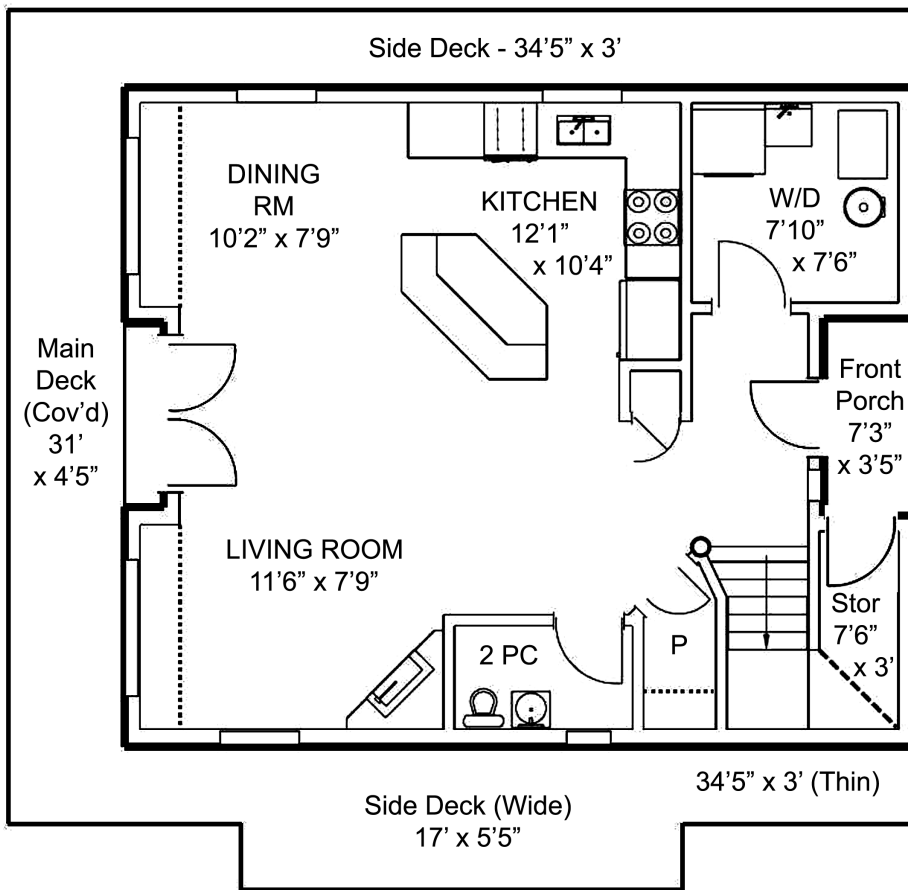


453 Head St. Slip B-28

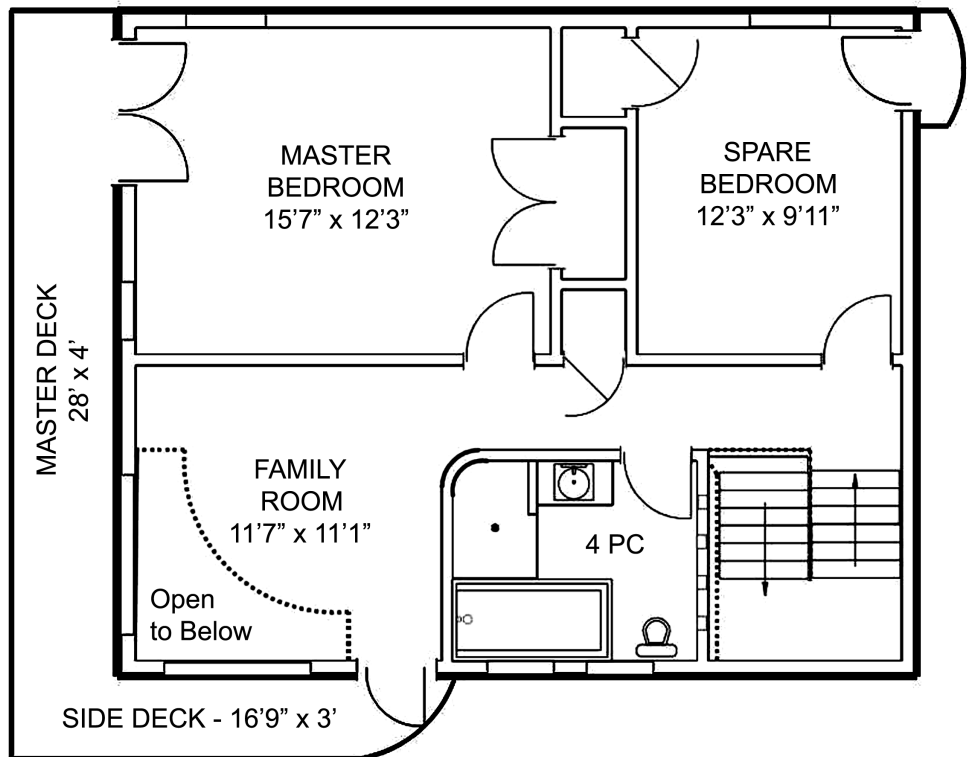


Total Sqft. - 1980 Sqft.

Total Finished - 1463 Sqft.
Total Unfinished - 517 Sqft.

Main Floor (Avg Ht. - 8'6")
Finished - 713 Sqft.
Unfinished - 363 Sqft.
Upper Floor (Avg Ht. - 12'8")
Finished - 750 Sqft.
Unfinished - 154 Sqft.

MAIN FLOOR (Lower Floor)



UPPER FLOOR

Floorplan was created for the exclusive use
of Jeremy Eade, Sophia Briggs and Sothebys International Realty
by **ALL-IN-ONE Real Estate Photography Solutions**
(250) 298-0857 - All-In-OneREPS@shaw.ca
www.RealEstatePhotosVictoria.ca

Area and dimensions are approximate, buyer to verify on site.